



## Westport Collection



The **Westport Collection** is an elegant full custom insulated overhead door featuring flat or raised panels fabricated using Overlay Construction. *Stain grade doors* feature solid Spanish Cedar or other preferred species on panels and trim boards. *Paint grade doors* are constructed with Marine grade plywood panels and solid Spanish Cedar or other preferred species on trim boards. Factory applied stain or paint finish is available.

DOOR SPECS

Paint Grade or Stain Grade

Thickness 2-7/8"

Insulated

Windows - True Divided Lites

Matching Entry Doors Available

Architectural Door Corp

75 North Pine Creek Road Fairfield, CT 06824

Phone: (877) 259-DOOR (3667) [www.architecturaldoorcorp.com](http://www.architecturaldoorcorp.com)



FULL CUSTOM WOOD

# Architectural Door Corp.

## Standard Window Designs

### Swing Look Styles



SW-16L



SW-16LSAT



SW-12L



SW-12LSAT



SW-8L



SW-8LSAT



SW-6L



SW-6LSAT

### Trifold Look Styles



TF-18L



TF-18LSAT



TF-12L



TF-12LSAT



TF-6L



TF-6LSAT



TF-3L



TF-3LSAT

### Bifold Look Styles



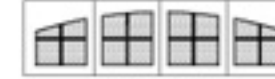
BF-24L



BF-24LSAT



BF-16L



BF-16LSAT



BF-4L



BF-4LSAT



BF-8L



BF-8LSAT

# Architectural Door Corp.

## Standard Window Designs

### Swing Look Styles



SW-16L



SW-16LSAT



SW-12L



SW-12LSAT



SW-8L



SW-8LSAT



SW-6L



SW-6LSAT

### Trifold Look Styles



TF-18L



TF-18LSAT



TF-12L



TF-12LSAT



TF-6L



TF-6LSAT



TF-3L



TF-3LSAT

### Bifold Look Styles



BF-24L



BF-24LSAT



BF-16L



BF-16LSAT



BF-4L



BF-4LSAT

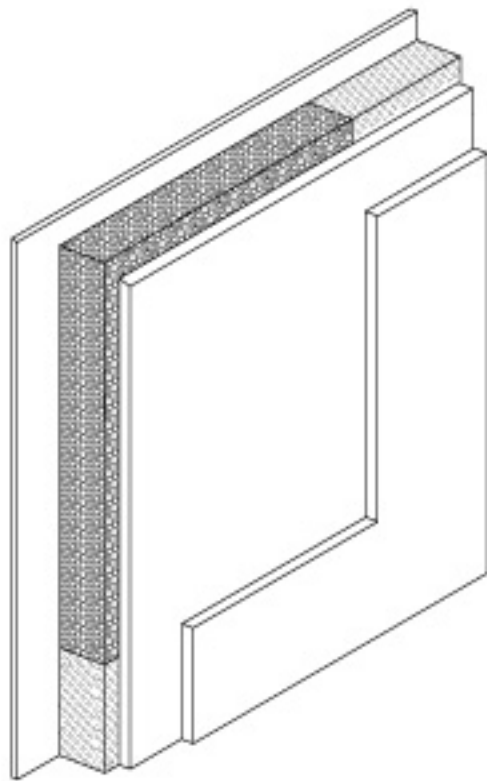


BF-8L





BF-8LSAT

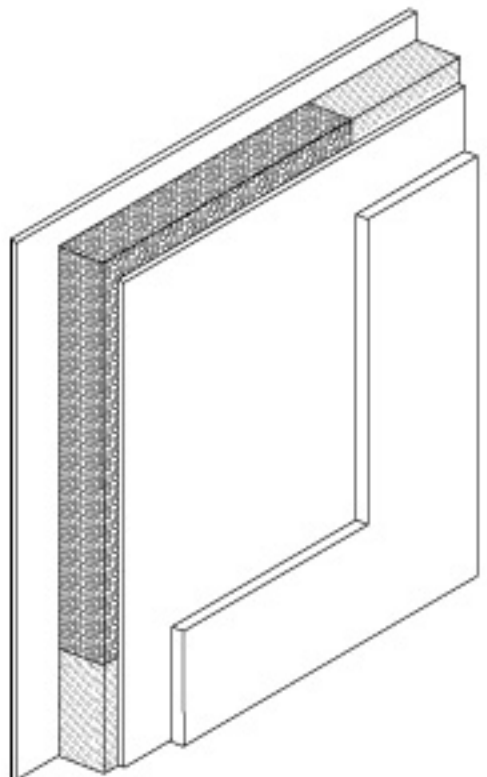
# WESTPORT COLLECTION





## STAIN GRADE CONSTRUCTION DETAIL

- 1/4" HARDWOOD PLYWOOD BACKER PANEL
- 1-1/4" POLYSTYRENE INSULATION 
- 1-1/4" ENGINEERED WOOD CORE 
- 9/16" CLEAR SPANISH CEDAR OVERLAYMENT
- 9/16" CLEAR SPANISH CEDAR TRIM

OVERALL THICKNESS 2-5/8"



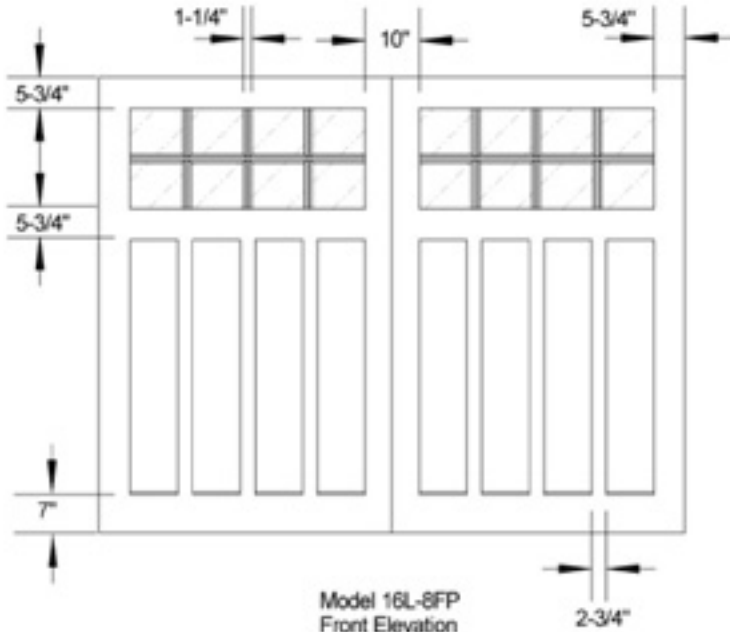
## PAINT GRADE CONSTRUCTION DETAIL

- 1/4" HARDWOOD PLYWOOD BACKER PANEL
- 1-1/4" POLYSTYRENE INSULATION 
- 1-1/4" ENGINEERED WOOD CORE 
- 1/4" 5 PLY MARINE PLYWOOD OVERLAYMENT
- 9/16" CLEAR SPANISH CEDAR TRIM

OVERALL THICKNESS 2-5/16"

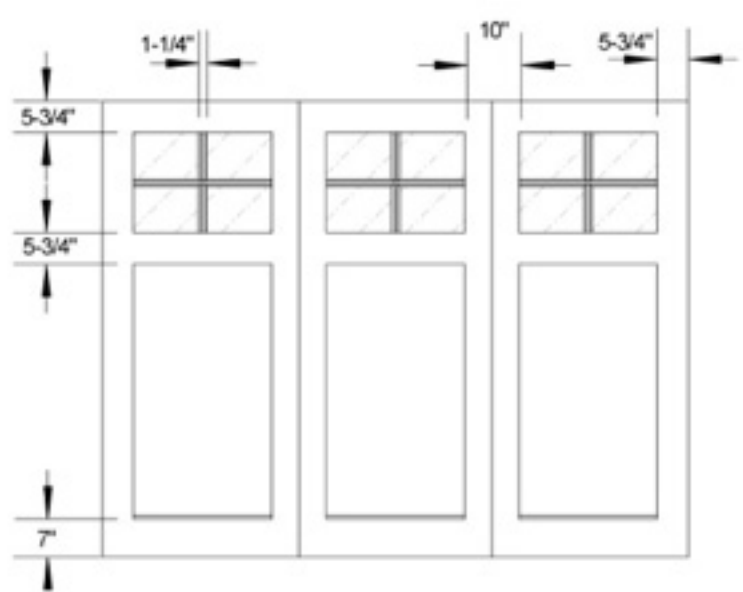
# WESTPORT COLLECTION

STANDARD TRIM SPECIFICATIONS  
*Swing Look Style*



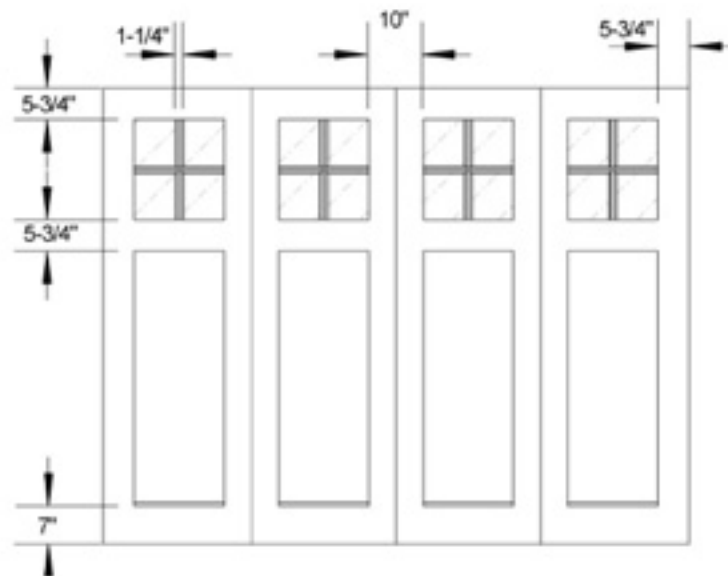
Model 16L-8FP  
Front Elevation  
Scale: 1/2" = 10"

STANDARD TRIM SPECIFICATIONS  
*Trifold Look Style*



Model TF-12L-3FP  
Front Elevation  
Scale: 1/2" = 10"

STANDARD TRIM SPECIFICATIONS  
*Bifold Look Style*



Model BF-16L-4FP  
Front Elevation  
Scale: 1/2" = 10"

**ARCHITECTURAL DOOR CORP.**

75 North Pine Creek Rd Fairfield, CT 06824 (877) 259-DOOR (3667)  
www.architecturaldoorcorp.com